



THE DELIVERY FORECAST MESSAGE

DELFOR

EDIFACT D.96A

Version 1.1

Author: Torbjörn Grahm / Encode AB

THE DELIVERY FORECAST MESSAGE DELFOR EDIFACT D.96A	1
THE DELIVERY FORECAST MESSAGE	3
Functional Definition	3
BRANCHING DIAGRAM OF USED SEGMENTS AND SEGMENT GROUPS	4
DATA SEGMENT CLARIFICATION	5
DETAILED SEGMENT DESCRIPTION	6
UNH – Message header	6
BGM - Beginning of message	7
DTM – Date/time/period	8
G02/NAD - Name and address	9
UNS – Section Control	10
G04/NAD - Name and address	11
G08/LIN – Line item	12
G08/IMD – Item Description	13
G08/LOC – Place/location identification	14
G10/RFF – Reference	15
G12/QTY – Quantity details	16
G13/RFF – Reference	17
G13/DTM – Date/time/period	18
G12/QTY – Quantity details	19
G12/SCC – Scheduling conditions	20
G12/DTM – Date/time/period	21
UNS – Section Control	22
UNT – Message trailer	23
MESSAGE SAMPLE	24
LIST OF CHANGES	25

The Delivery Forecast message

This specification provides the definition of the delivery forecast message (DELFOR) to be used in Electronic Data Interchange (EDI) between Gnotec and trading partners.

The document contains only these segments and data elements used by Gnotec.

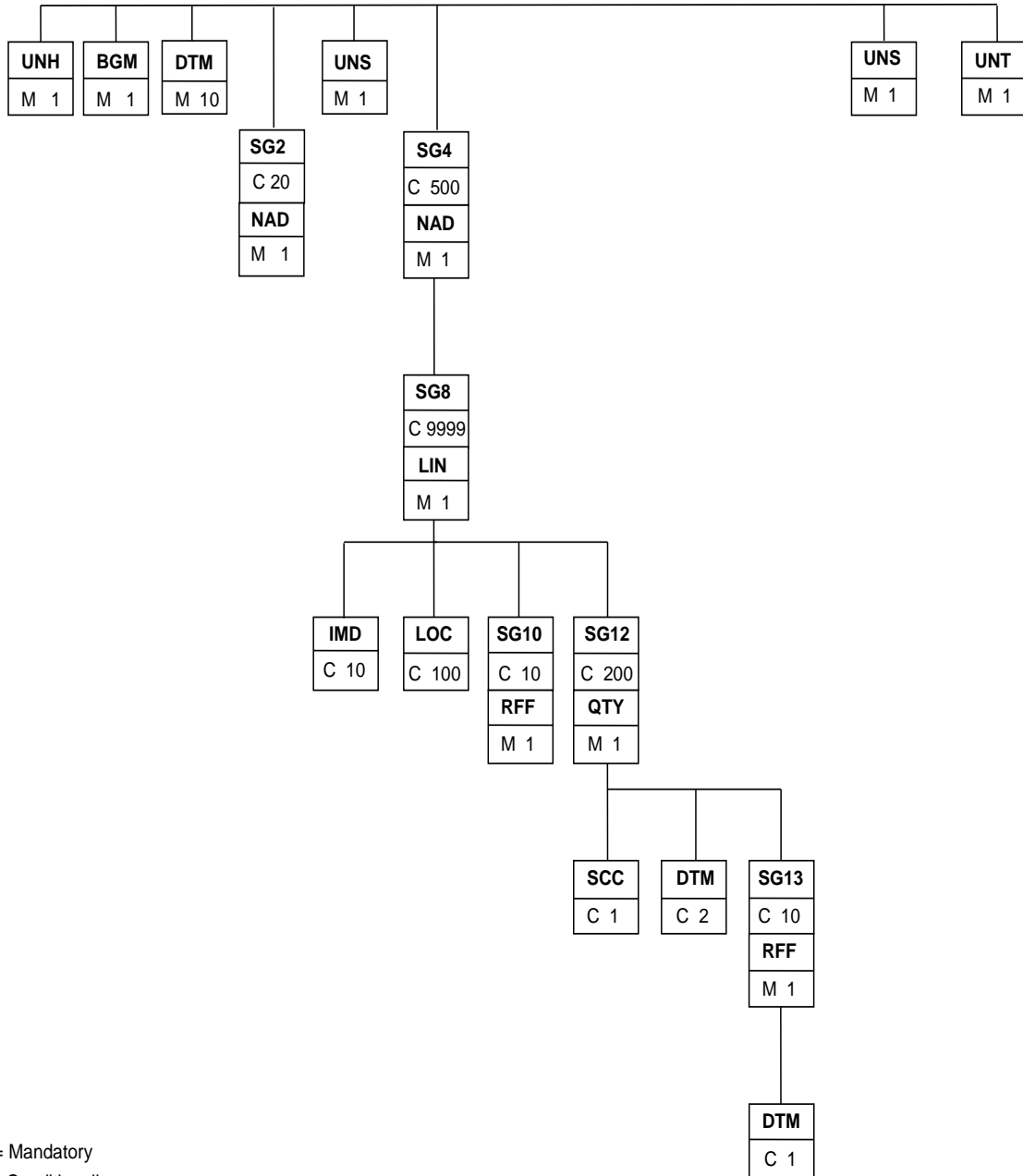
This documentation is a real subset of the EDIFACT message of directory D96A.

Functional Definition

The Delivery Forecast message is a message from Gnotec to a Gnotec supplier giving details for both short and long-term material requirements in line with the conditions set out in the purchase contract. Both firm orders and forecasts will be shown in the message.

The contents of this message will show the Gnotec requirements of the DELFOR message and include specific notes and comments to the use of each segment, data element and codes.

Branching diagram of used segments and segment groups



Data Segment Clarification

This section should be read in conjunction with the Branching Diagram and the Segment Table which indicate mandatory, conditional and repeating requirements.

The following guidelines and principles apply to the whole message and are intended to facilitate the understanding and implementation of the message:

All specified dates/times should be in the format 'ccyymmdd'/'hhmm' unless all parties involved in the transaction agree that there is a functional requirement for an alternative format.

Where a choice of code or text is given only the code element should be used wherever possible.

Conditional data that is not required in the message should not be included.

Care must be taken that the segment qualifier in dependent segments do not conflict with the segment qualifier of the trigger segment of a group.

Free text information within the message should be avoided as this inhibits automatic processing.

Reading instructions

Tag	Data elements or composite data elements or both as applicable.
Name	Segment, composite or element name.
M/C	Restrictions by EDIFACT standard - mandatory or conditional.
Format	Element format.
R/D	Restrictions by Gnotec standard – required or dependent.
Value	Bold indicates a constant otherwise an example value.
Comment	Comment.
Sample	An example of the described segment.

A sample segment usage looks like this:

Tag	Name	Format	Value	Comment
BGM	Document type and number	M	R	
C002	Document	C	R	
1001	Document name, coded	C an..3	R 241	
1004	Document number	C an..35	R 2006	Delivery schedule number

Sample:
BGM+241+2006'

Detailed Segment Description

UNH – Message header

Function:

To head, identify and specify a message.

UNH	Message header	M	R		
0062	Message reference number	M	an..14	R	106110 Unique message reference assigned by the sender
S009	Message identifier	M		R	
0065	Message type	M	an..6	R	DELFOR DELFOR – message name
0052	Message version number	M	an..3	R	D D – Draft
0054	Message release number	M	an..3	R	96A 96A
0051	Controlling agency, coded	M	an..2	R	UN UN - United Nations

Sample:

UNH+106110+DELFOR:D:96A:UN'

BGM - Beginning of message

Function:

To indicate the type and function of a message and to transmit the identifying number.

BGM	Document type and number	M	R		
C002	Document	C	R		
1001	Document name, code	C	an..3	R	241 241 = Delivery Schedule. Document/message by means of which the buyer informs the seller about the requested goods
1004	Document number	C	an..35	R	2006 Delivery Schedule number

Sample:

BGM+241+2006'

DTM – Date/time/period

Function:

To specify date, and/or time.

DTM	Document date	M	R		
C507	Date/time/period	M		R	
2005	Date/time/period function code qualifier	M	an..3	R	137 137 = Document/message date. Date/time when a document/message is issued
2380	Date/time/period value	C	an..35	R	20140701 Delivery Schedule date. CCYYMMDD
2379	Date/time/period format code	C	an..3	R	102 102 = Code for date format CCYYMMDD
DTM	Effective from date	C		D	
C507	Date/time/period	M		R	
2005	Date/time/period function code qualifier	M	an..3	R	157 157 = Validity start date. The date from which the new delivery schedule is valid
2380	Date/time/period	C	an..35	R	20140701 Validity start date. CCYYMMDD
2379	Date/time/period format qualifier	C	an..3	R	102 102 = Code for format CCYYMMDD

Sample:

DTM+137:20140701:102'

DTM+157:20140701:102'

G02/NAD - Name and address

Function:

To specify the identification of each party involved in the business relationship.

G02/NAD	Buyer	C	R		
3035	Party function code qualifier	M	an..3	R	BY BY = Buyer
C082	Party identification details	C		R	
3039	Party identifier	M	an..17	R	0125 Identification code allocated to the buyer
3055	Code list responsible agency code	C	an..3	R	91 91 = Assigned by seller
G02/NAD	Seller	C		R	
3035	Party function code qualifier	M	an..3	R	SE SE = Seller
C082	Party identification details	C		R	
3039	Party identification	M	an..35	R	1000 Identification code allocated to the seller
3055	Code list responsible agency code	C	an..3	R	92 92 = Assigned by buyer

Sample:

NAD+BY+0125::91'

NAD+SE+1000::92'

UNS – Section Control

Function:

To separate Header and Detail sections of the message.

UNT	Section Control	C	R	
0081	Section identification	M an1	R D	D = Header/detail section separation

Sample:
UNS+D'

G04/NAD - Name and address

Function:

To specify the identification of the consignee where the goods should be shipped to.

G04/NAD	Consignee	C	R		
3035	Party function code qualifier	M	an..3	R	CN CN = Consignee
C082	Party identification details	C		R	
3039	Party identifier	M	an..17	R	13561 Identification code allocated to the consignee
3055	Code list responsible agency code	C	an..3	R	92 92 = Assigned by buyer

Sample:

NAD+CN+13561::92'

G08/LIN – Line item

Function:

To identify a line item.

G08/LIN	Line Item	M	R	
1229	Action request	C	an..3	R 3 3 = Change. Replaces previous delivery instruction
C212	Item number identification	C		R
7140	Item number	C	an..35	R B1620 Item number
7143	Item number type	C	an..3	R IN IN = Buyers part/item number

Sample:

LIN++3+B1620:IN'

G08/IMD – Item Description

Function:

To specify a description for an item.

G08/IMD	Item Description	C	D	
C273	Item description	C	R	Omitted by some Gnotec companies
7008	Item description	C	an..35 R	BRACKET Item description

Sample:

IMD+++:::BRACKET'

G08/LOC – Place/location identification

Function:

To specify the place where the goods should be received and unloaded.

G08/LOC	Place/location identification	C	R		
3227	Place/location qualifier	M	an..3	R	11 = Place/port of discharge
C517	Location identification	C		R	
3225	Place/location identification	C	an..25	R	0 Gnotec's code on the place of discharge. This code should be printed on the Odette label under the "Dock / Gate" section
G08/LOC	Place/location identification	C		D	
3227	Place/location qualifier	M	an..3	R	159 = Additional internal destination
C517	Location identification	C		R	
3225	Place/location identification	C	an..25	R	INBOUND 2 Gnotec's code on the final unloading point. This code should be printed on the Odette label under the "Dock / Gate" section

Sample:

LOC+11+0'

LOC+159+INBOUND 2'

G10/RFF – Reference

Function:

To specify an order number assigned to the part/item number

G10/RFF	Order number	C	R		
C506	Reference	M	R		
1153	Reference qualifier	M	an..3 R	ON	ON = Order number. Reference number assigned by the buyer
1154	Reference number	C	an..35 R	2160B	Buyer's order number

Sample:

RFF+ON:2160B'

G12/QTY – Quantity details

Function:

To specify the previous despatched and received quantities between seller and buyer.

G12/QTY	Despatched quantity	C	D		Omitted if no DESADV has been received
C186	Quantity details	M	R		
6063	Quantity qualifier	M	an..3	R	12 = Despatched quantity. Quantity despatched by the seller according to the DESADV message
6060	Quantity	M	n..15	R	1736 Despatched quantity
6411	Measure unit qualifier	C	an..3	D	Measure unit qualifier. If no code is specified, 'PCE' is default Unit qualifiers that may occur: PCE = Pieces KGM = Kilogram MTR = Metre
G12/QTY	Received quantity	C	D		Omitted if no DESADV has been received
C186	Quantity details	M	R		
6063	Quantity qualifier	M	an..3	R	48 = Received quantity. Quantity received by the buyer
6060	Quantity	M	n..15	R	1736 Received quantity
6411	Measure unit qualifier	C	an..3	D	Measure unit qualifier. If no code is specified, 'PCE' is default Unit qualifiers that may occur: PCE = Pieces KGM = Kilogram MTR = Metre

Sample:

QTY+12:1736'

QTY+48:1736'

G13/RFF – Reference

Function:

To specify the three (3) latest received DESADV messages sent by the seller.

G13/RFF	DESADV number	C	D	
C506	Reference	M	R	Omitted if no DESADV has been received
1153	Reference qualifier	M an..3	R AAK	AAK = Despatch note number. Reference number from the BGM segment in the DESADV message
1154	Reference number	C an..35	R 57	Seller's despatch note number

Sample:

RFF+AAK:57'

G13/DTM – Date/time/period

Function:

To specify the date of the three (3) latest received DESADV messages sent from the seller.

G13/DTM	Despatch note date	C	D			
C507	Date/time/period	M	R			Omitted if no DESADV has been received
2005	Date/time/period function code qualifier	M	an..3	R	171	171 = Reference date. Date from the BGM segment in the DESADV message
2380	Date/time/period value	C	an..35	R	20140604	Despatch note date. CCYYMMDD
2379	Date/time/period format code	C	an..3	R	102	102 =Code for date format CCYYMMM

Sample:

DTM+171:20140604:102'

G12/QTY – Quantity details

Function:

To specify backorder quantity and the quantity to be delivered.

G12/QTY	Backorder quantity	C	D		Omitted if no backorder quantities exists
C186	Quantity details	M	R		
6063	Quantity qualifier	M	an..3	R	83 = Backorder quantity
6060	Quantity	M	n..15	R	200 = Backorder quantity
6411	Measure unit qualifier	C	an..3	D	Measure unit qualifier. If no code is specified, 'PCE' is default. Unit qualifiers that may occur: PCE = Pieces KGM = Kilogram MTR = Metre
G12/QTY	Quantity to be delivered	C	R		
C186	Quantity details	M	R		
6063	Quantity qualifier	M	an..3	R	113 = Quantity to be delivered
6060	Quantity	M	n..15	R	1600 = Quantity to be delivered
6411	Measure unit qualifier	C	an..3	D	Measure unit qualifier. If no code is specified, 'PCE' is default. Unit qualifiers that may occur: PCE = Pieces KGM = Kilogram MTR = Metre

Sample:

QTY+83:200'

QTY+113:1600'

G12/SCC – Scheduling conditions

Function:

To specify the status for each call-off; firm order, commitment for material or forecast.

G12/SCC	Scheduling conditions	C	R	
4017	Status indicator	M	R 1, 3 or 4	1 = Firm order 3 = Commitment for material 4 = Forecast

Sample:
SCC+1'

G12/DTM – Date/time/period

Function:

To specify the date when the seller is to send the goods or date when the goods should arrive at Gnotec.

G12/DTM	Delivery date	C	R		
C507	Date/time/period	M	R		
2005	Date/time/period function code qualifier	M	an..3	R	2 or 132 2 = Delivery date requested. Date when the seller is to send the goods. 132 = Arrival Date. Date when the goods should arrive at Gnotec.
2380	Date/time/period value	C	an..35	R	20140711 Date. CCYYMMDD
2379	Date/time/period format code	C	an..3	R	102 102 =Code for date format CCYYMMM

Sample:

DTM+2:20140711:102'

or

DTM+132:20140713:102'

UNS – Section Control

Function:

To separate Detail and Summary sections of the message.

UNT	Section Control	C	R	
0081	Section identification	M	an1	R S S = Detail/summary section separation

Sample:
UNS+S'

UNT – Message trailer

Function:

To end and check the completeness of a message.

UNT	Message trailer	M	R			
0074	Number of segments in a message	M	n..6	R	Number of segments in a message including UNT.	
0062	message reference number	M	an..14	R	106110	The value shall be identical to the value in 0062 in the corresponding UNH segment.

Sample:

UNT+68+106110'

Message sample

UNB+UNOA:1+09420000556242944800MEFA:OD+SELLERUNBCODE:OD+140701:0936+48272++TWIM'
UNH+106110+DELFOR:D:96A:UN'
BGM+241+2006'
DTM+137:20140701:102'
DTM+157:20140701:102'
NAD+BY+0125::91'
NAD+SE+1000::92'
UNS+D'
NAD+CN+13561::92'
LIN++3+B1620:IN'
LOC+11+0'
RFF+ON:2160B'
QTY+12:1736'
QTY+48:1736'
RFF+AAK:66698'
DTM+171:20140428:102'
QTY+12:1592'
QTY+48:1592'
RFF+AAK:67583'
DTM+171:20140519:102'
QTY+12:1545'
QTY+48:1545'
RFF+AAK:57'
DTM+171:20140604:102'
QTY+83:200'
QTY+113:1600'
SCC+1'
DTM+2:20140711:102'
QTY+113:1600'
SCC+4'
DTM+2:20141001:102'
QTY+113:1600'
SCC+4'
DTM+2:20141126:102'
QTY+113:26'
SCC+4'
DTM+2:20150316:102'
LIN++3+B1802:IN'
LOC+11+0'
RFF+ON:2160B'
QTY+12:13705'
QTY+48:13705'
RFF+AAK:67074'
DTM+171:20140507:102'
QTY+12:13546'
QTY+48:13546'
RFF+AAK:67640'
DTM+171:20140520:102'
QTY+12:13947'
QTY+48:13947'
RFF+AAK:9000001'
DTM+171:20140604:102'
QTY+113:15000'
SCC+4'
DTM+2:20140807:102'
QTY+113:12500'
SCC+4'
DTM+2:20140821:102'
QTY+113:15000'
SCC+4'
DTM+2:20140911:102'
QTY+113:15000'
SCC+4'
DTM+2:20141023:102'
QTY+113:14013'
SCC+4'
DTM+2:20141210:102'
UNS+S'
UNT+68+106110'
UNZ+1+48272'

List of changes

Version	Date	Changes
1.0	2014-08-18	First version
1.1	2016-06-07	Added segment IMD (item description) Added LOC+159 (final destination point). Added DTM+132 (arrival date at Gnotec). Added SCC+3 clarification. Added QTY+83 (Backorder). Changed some description texts as well.